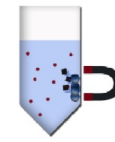


# MM-Separator M12 + 12, MD90001/MDMG0001

## MM-Separator M96, MD90002/MDMG0002/MD90003/MDMG0003

### Product Description



## Index

- I. Intended use
- II. Product description
  - MM-Separator M12 + 12 (P)
  - MM-Separator M96 (P)
  - MM-Separator PCR strip adapter (P)
- III. Storage and stability
- IV. Safety
- V. Additional Information

## I. Intended use

magtivio's MM-Separators are intended for magnetic separation of MagSi beads from liquid samples for isolation and purification of nucleic acids and proteins, immunoprecipitation, immunoassays (ELISA), cell sorting, and purification of biomolecules. MM-Separators are designed for optimal magnetic bead separation in terms of speed and bead pellet positioning, as well as stability and user-friendliness.

## II. Product descriptions

MM-Separator M12 + 12, MM-Separator M96, MM-Separator PCR Strip Adapter are magnetic separators for manual use with 1.5-2 mL centrifuge tubes, 96-well microplates, PCR microplates, or PCR tube strips. The neodymium (NdFeB, NIB, or Neo) magnets used for the separators are optimized to enable fast separation for minimum collection time. The separators are available as transparent acrylic versions for optimal visual inspection needs and in chemically resistant polyoxymethylene (POM, indicated with "P") for routine use of organic solvents. For detailed information about the resistency towards commonly used reagents, please contact us.

## MM-Separator M12 + 12 (P)

Art.No.: MD90001 / MDMG0001

The MM-Separator M12 + 12 is designed for manual use with various 1.5 and 2 mL microtubes.

MM-Separator M12 + 12 enables easy separation of beads from liquids for processing low amounts of samples with working volumes from 10 µL to 2 mL. In the centre, 12 magnets allow accommodation of up to 24 centrifuge tubes.

The separator is designed to hold 2 mL microtubes in a stable upright position, and 1.5 mL tubes in a slightly tilted position for fast separation and easy handling in small-to-medium volumes. After liquids are pipetted off, microcentrifuge tubes can be conveniently placed on the outer positions for resuspending beads and further processing. MagSi beads typically collect from a solution to the side of a centrifuge tube between 10 seconds and 3 minutes (depending on the type of beads and application). Separation of MagSi-DNA beads is completed within 10 seconds.



Fig. 1: MM-Separator M12 + 12. Dimensions: 21.7 cm x 11 cm x 2.5 cm. Weight: ±0.7 kg

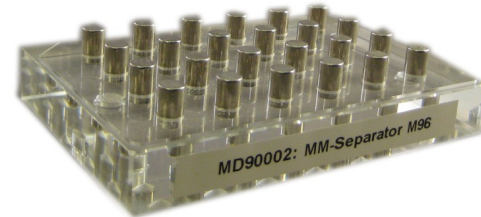


Fig. 2: MM-Separator M96. Dimensions: 12.8 cm x 8.6 cm x 2.5 cm. Weight: ±0.4 kg

## MM-Separator M96 (P)

Art.No.: MD90002 / MDMG0002

This product is designed for manual use with 96 well microplates and PCR plates.

MM-Separator M96 enables easy separation of beads from liquids for multiple sample processing with 8- or 12-channel pipettes. As illustrated in Fig. 2, the separator holds 24 magnets that are placed for magnetic separation of beads in 96 wells.

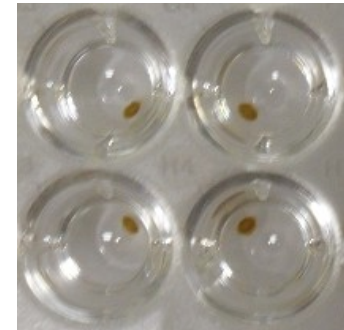


Fig. 3: MagSi-beads collected with MM-Separator M96 in 4 wells of a 96-well U-bottom microplate.

MM-Separator M96 allows magnetic particles to be pulled to the side of wells for optimal access to the bottom and easy supernatant removal. The product is suitable for U- and V-bottom shaped 96 well microplates and for most PCR plates, skirted or semi- and non-skirted.



Fig 4: POM versions of the manual separators

# MM-Separator M12 + 12, MD90001/MDMG0001 MM-Separator M96, MD90002/MDMG0002/MD90003/MDMG0003

## Product Description

### MM-Separator PCR Strip Adapter (P)

**Art.No.: MD90002 (use with MD90002) /  
MDMG0003 (use with MDMG0003)**

This product is designed for manual use with 8- and 12-tube PCR strips and is complementary to MM-Separator M96.

The adapter can be placed on the MM-Separator M96 and is suitable for users with smaller sample throughputs, preferring use of PCR tube strips over PCR plates.

Together, the MM-Separator M96 and the MM-Separator PCR Strip Adapter enable use of a broad range of consumables with a fast and easy solution. These separators are suitable for use with U- or V-shaped 96 well microplates and for 96-well PCR plates in various formats, and 8- and 12-tube PCR strips. MagSi beads typically collect from a solution within 1-2 minutes, after which liquids are pipetting off easily with a single, 8- or 12-channel multi-pipette.

### III. Storage and stability

MM-separators should be cleaned with water and mild detergents. Contact with harsh chemicals or organic solvents may damage the surface. For detailed information about the resistency towards commonly used solvents, please contact magtivio. Store at room temperature in dry environment. Do not heat the magnets above 80°C, as this will result in loss of magnetic properties!

### IV. Safety

Strong magnetic field. Before working with the magnets, take appropriate safety measures. Keep the magnets away from ferrous materials, and magnetic media like computers, videotapes, credit cards etc.



Fig. 4: MM-Separator PCR strip adapter.  
Dimensions: 12.8 cm x 8.6 cm x 1.0 cm.  
Weight: ±0.1 kg

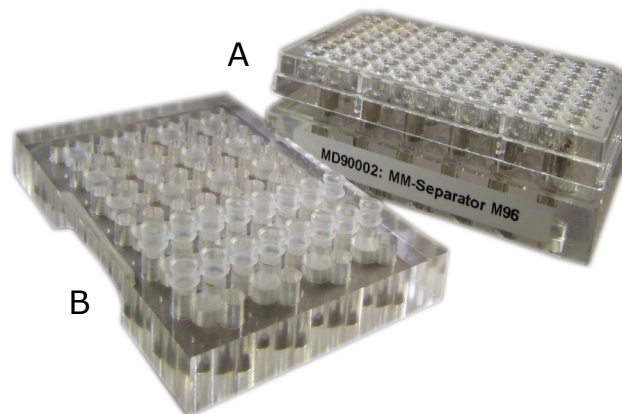
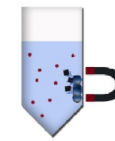


Fig. 5: (A) MM-Separator M96 with full-skirt 96 well PCR plate (B).  
MM-Separator PCR strip adapter with 8-tube PCR strips



magtivio

## V. Additional Information

### Internet

[www.magtivio.com](http://www.magtivio.com)

### Disclaimer

For R&D use only. Not for drug, household or other uses.

### Order Information

Product	Art.No.
MM-Separator M12 + 12	MD90001
MM-Separator M96	MD90002
MM-Separator PCR strip adapter	MD90003
MM-Separator M12 + 12 P	MDMG0001
MM-Separator M96 P	MDMG0002
MM-Separator PCR strip adapter P	MDMG0003

### magtivio B.V.

#### Office, Lab & Production

Daelderweg 9

6361 HK Nuth (The Netherlands)

Tel: +31-(0)45-208 4810

Fax: +31-(0)45-208 4817

E-mail: [info@magtivio.com](mailto:info@magtivio.com)